

ADAS[®]

Large Span





MULTIMEDIA ENGINEERING PTE LTD

Since 1988

- Design and build Archi-Engineering firm
- 35 years experience with more than 650 projects
- Lightweight long span structure specialists
- Low risk with tested & proven design details
- Benefits of high levels of Prefabrication:
 - Fast Erection on Site
 - Precise Fabrication
 - Good Quality Control
- Low Maintenance with non-stick roof surface

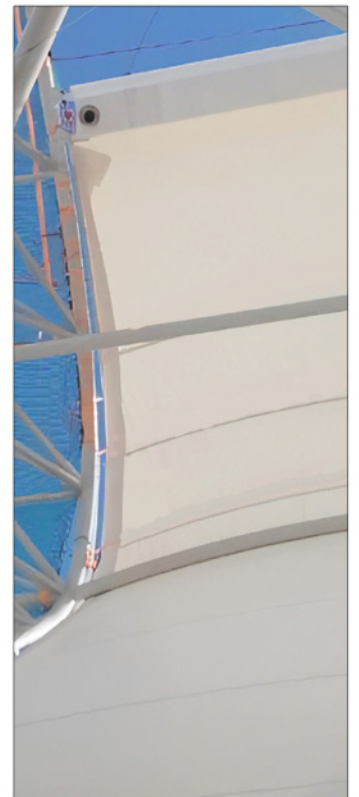


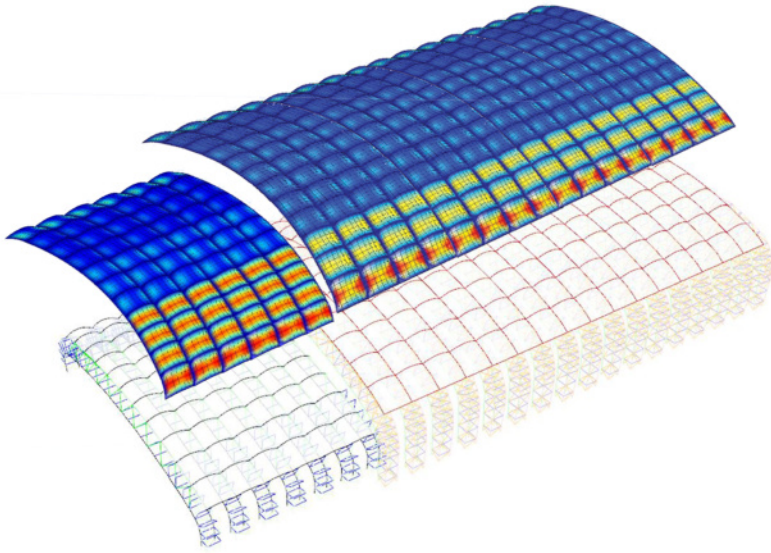
FEATURES OF ADAS® LARGE SPAN



 **ADAS Large Span**
Lightweight Structure

- **Modular design with inter-modular compatibility**
 - Easy future expansion and alterations
- **Pre-engineered large span structures are self-supporting**
 - No intermediate columns are required
 - Maximises use of unobstructed space
- **Fabric provides abundant interior sunlight**
 - No artificial lighting needed during the day
 - Save energy and lower utility costs
- **Maintenance-free with long-term durability**
 - Our materials are self-cleaning; dust, dirt and pollutants are easily washed off by rainfall



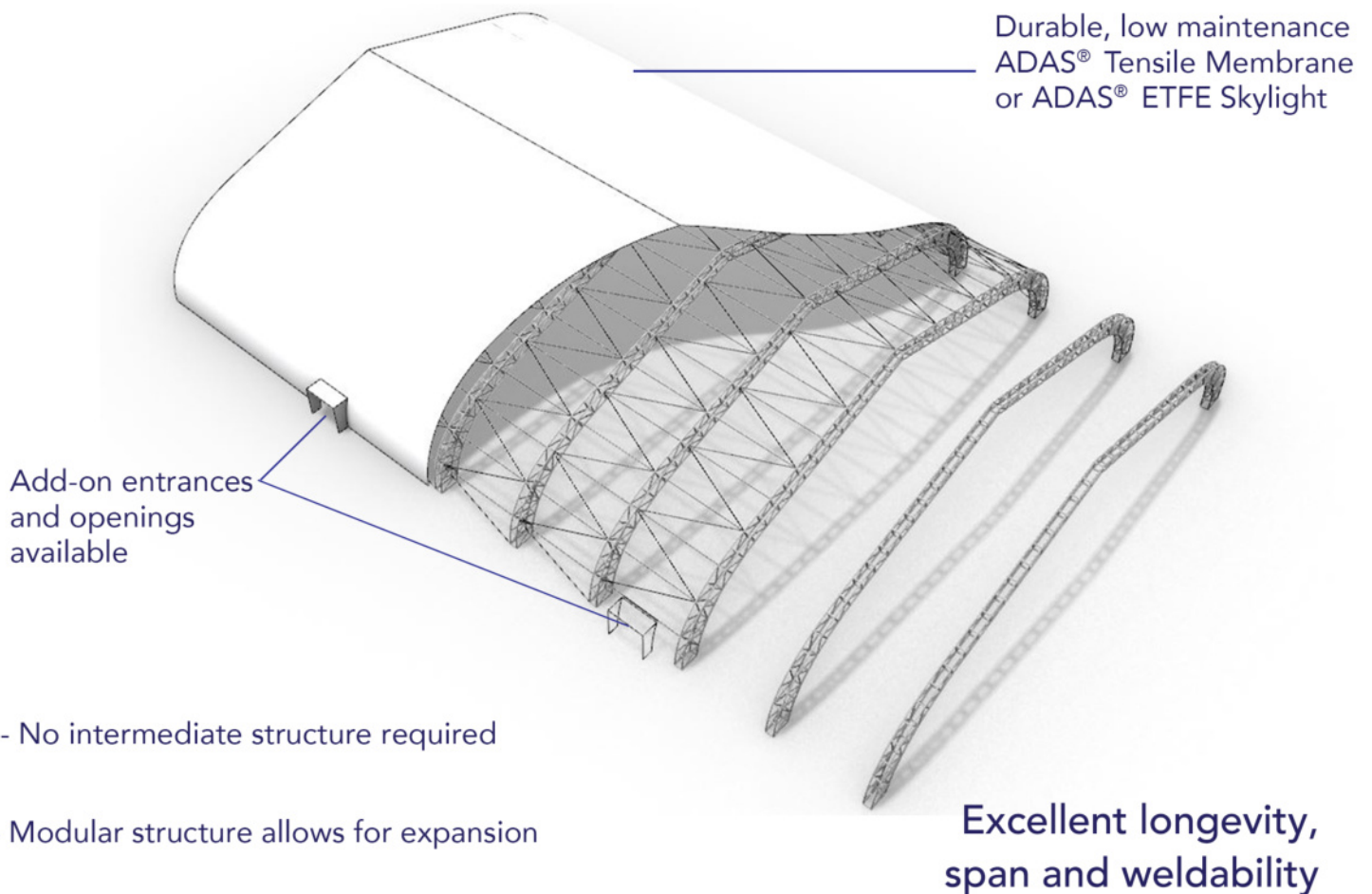


Advanced Engineering

Apart from meeting European and local standards, ADAS performs advanced engineering analyses for large span structures to determine the model form and buckling behaviour. This includes an extensive application of the Finite Element Method (FEM) for structural and component stress analysis.

This allows us to optimise the structural efficiency and performance of each project.

MODULAR STRUCTURE WITH ADD-ON COMPONENTS

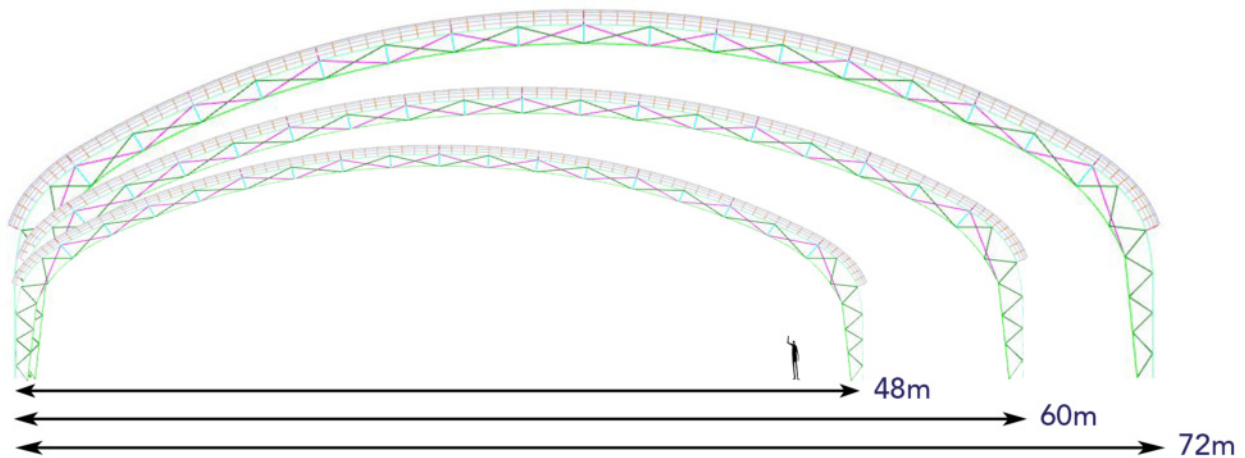


Add-on entrances and openings available

Durable, low maintenance
ADAS® Tensile Membrane
or ADAS® ETFE Skylight

Excellent longevity,
span and weldability

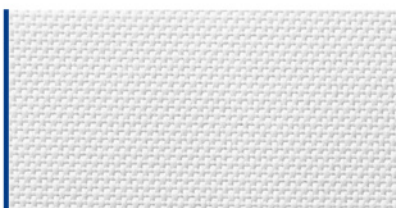
- No intermediate structure required
- Modular structure allows for expansion



**High Dimensional Stability with
Durable and Highly Resistant Membrane Options**
Designed for demanding environments and applications.

		ADAS® LS48	ADAS® LS60	ADAS® LS72
Width		Up to 48m	Up to 60m	Up to 72m
Length *		Unlimited with an increment of 4 - 6 metres.		
Membrane Material	800 µm	✓	✓	-
	1000 µm	-	✓	✓
Material life span		Up to 30 years		
No Columns inside		✓ ADAS® Large Span is supported by its truss framing system.		
Fast installation		✓ All components are designed to fit in standard containers and trucks for easy transportation and installation.		
Weather Protection		✓ 100% Water tight design with weather resistant membrane material.		
Low Maintenance		✓ Minimum maintenance due to the non-stick membrane surface.		

** Length and width of non-standard options can be customized.*



PVDF Coated PVC



PTFE-coated fiberglass
(turns white after exposure
to sunlight)



ETFE film
(transparent, matte or fritted)



Key Features

- + Clear Span
- + Modular
- + Flexible
- + Fast Construction
- + Super Lightweight
- + Durable
- + Easy Maintenance

Functions

- o Storage Facilities
- o Exhibition / Events Halls
- o Sports Halls
- o Aircraft Hangars
- o Warehouses

 **ADAS Large Span**
Lightweight Structure

ADAS® LARGE SPAN



ADAS® Large Span is a high performance structural system that consists of high quality steel members clad with PTFE or PVDF-coated fabrics. These lightweight and durable fabrics allow the supporting structure to be designed as minimally as possible, resulting in unobstructed internal spaces that can easily span up to and over 72 metres.

As such, ADAS® Large Span enables the optimisation of floor area, offering a perfect balance between structural performance and

ROI (Return on Investment). The removal of any intermediate support also reduces substructure costs and construction times. Additionally, the modular, expandable nature of the structure results in design flexibility and an adaptive use of space.

To suit the unique requirements of each project, ADAS® Large Span structures can be customised and adapted according to our clients' needs.



Singapore Office Multimedia Engineering Pte Ltd

50 Bukit Batok Street 23 #05-15,
Midview Building Singapore 659578.

Tel
(65) 6765 6288

Email
mepl@me.com.sg

Website
www.me.com.sg

Malaysia Office

Contact Person : Mr Ryan Wong
Tel (60) 11-1081 6630
Email adas_hightex@live.com

USA Office

Contact Person : Mr Bernd Rennebeck
Tel (386) 668 0474
Email bernd@spstin.com